



Dynamic Support for your Business  
**Industrial smart handheld reader**







Marvell™ PXA 270 524Mhz | Memory RAM 128MB / ROM 256MB  
RFID UHF 900MHz GEN2, ISO/IEC 18000-6C | HF ISO15693, MIFARE, ISO14443A/B  
1D Laser and 2D Imager Barcode Scanner | WLAN(IEEE802.11 b/g)  
Bluetooth Class II, v2.0 | Camera with Flash | GPS

# AT570

Aerospace, Logistics, Asset tracking



AT570 with UHF



AT570 with UHF



AT570 with Cradle



Marvell™ PXA 270 524Mhz | Memory RAM 128MB / ROM 256MB  
RFID UHF 900MHz GEN2, ISO/IEC 18000-6C | HF ISO15693, MIFARE, ISO14443A/B  
1D Laser and 2D Imager Barcode Scanner | WLAN(IEEE802.11 b/g)  
GSM/GPRS, CDMA/HSDPA | Bluetooth Class II, v2.0 | Camera with Flash | GPS

# AT870

Warehouse, Pharmaceutical, Parcel service



AT870 with  
UHF & Gun Handle



AT870 with Gun  
Handle



AT870 with Cradle



Marvell™ PXA 320 806Mhz | Memory RAM 256MB / ROM 256MB(Max. 512MB Option)  
RFID UHF 900MHz GEN2, ISO/IEC 18000-6C | HF ISO15693, MIFARE, ISO14443A/B  
1D Laser and 2D Imager Barcode Scanner | WLAN(IEEE802.11 a/b/g)  
GSM/GPRS, CDMA/HSDPA | Bluetooth Class II, v2.0 | Camera with Flash | GPS

# Si203

Library, Logistics, Military



Si203 UHF  
Big Size Antenna



Si203 UHF  
Small Size Antenna



Si203 with  
UHF & Gun Handle



Si203 with Cradle





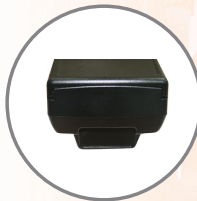
Marvell™ PXA 320 806Mhz | Memory RAM 256MB / ROM 256MB(Max. 512MB Option)  
 RFID UHF 900MHz GEN2, ISO/IEC 18000-6C | HF ISO15693, MIFARE, ISO14443A/B  
 1D Laser and 2D Imager Barcode Scanner | WLAN(IEEE802.11 a/b/g)  
 GSM/GPRS, CDMA/HSDPA | Bluetooth ClassII, v2.0 | Printer(2")/MSR/Smart Card Reader  
 Fingerprint | Camera with Flash | GPS

# Si303

Whiskey control, Shopping mall, Livestock



Si303 with UHF



Barcode scanner



Printer & MSR



Fingerprint



32-bit ARM Cortex-M3 72MHz | Memory RAM 48KB/ ROM 256KB (Max.512KB)  
 1D Laser Barcode Scanner | Bluetooth V2.0+EDR Class 1 | Antenna Built-in PiFA Type  
 GPS Integrated Sirf3 / NMEA0183 format | USB Data Communication

# Si506

Asset tracking, Jewelry, Air baggage



Compact size



Barcode scanner



SAMSUNG S5PC 110 1GHz | Memory RAM 512MB / ROM 512MB  
 RFID UHF 900MHz GEN2, ISO/IEC 18000-6C | HF ISO15693, MIFARE, ISO14443A/B  
 1D Laser and 2D Imager Barcode Scanner | WLAN(IEEE802.11 b/g/n)  
 GSM/GPRS, 3G HSDPA | Bluetooth ClassII, v2.0  
 Camera CMOS 5 MEGA Pixel with Flash | GPS

# Smart Eagle

Hospital, Shopping mall, Department store



Smart Eagle Rear



Smart Eagle Left Side



Smart Eagle Right Side



Smart Eagle Top



Smart Eagle Bottom

# ATID Products Specifications

Items	AT570	AT870	Si203
<b>Performance Characteristics</b>			
Processor	Marvell™ PXA270 524MHz	Marvell™ PXA270 524MHz	Marvell™ PXA320 806MHz
Operating System	Windows CE 5.0	Windows CE 5.0	Windows CE 5.0
Memory	RAM 128MB / ROM 256MB	RAM 128MB / ROM 256MB	ROM 256MB (Max.512MB Option) / RAM 256MB
Display	3.5" QVGA with Backlight, TFT LCD, 240×320 Pixel, 262, 144 Color	3.5" QVGA with Backlight, TFT LCD, 240×320Pixel, 262,144 Color	3.5" QVGA with Backlight, TFT LCD, 240×320Pixel, 262, 144 Color
	Stylus Touch Screen Interface	Stylus Touch Screen Interface	Stylus Touch Screen Interface
Weight	270g	250g	280g
Operating Temp.	-20℃ to 50℃	-20℃ to 50℃	-10℃ to 50℃
Storage Temp.	-40℃ to 60℃	-40℃ to 60℃	-30℃ to 60℃
Humidity	95% non-condensing	95% non-condensing	95% non-condensing
Drop Spec.	1.5M.Drop to concrete	1.5M.Drop to concrete	1.5M.Drop to concrete
Dust & Water Proof	IP54	IP64	IP65
<b>Physical Characteristics</b>			
Audio	Phone Receiver, Mono Speaker, Ear Jack	Phone Receiver, Mono Speaker, Ear Jack	Phone Receiver, Mono speaker, Ear jack
Port	Serial Port(Rs-232)	Serial Port(Rs-232)	Serial Port(RS-232), USB 1.1
Expansion Slot	1 Micro SD Slot 1 SAM Slot	1 Micro SD Slot,1 SAM Slot	1 Micro SD Slot(SDHC support) /1 SIM Slot / 1 SAM Slot
Notification	Vibrator and LED	Vibrator and LED	Vibrator and LED
Dimensions	175mm(L) x 76mm(W) x 23mm(H)	146mm (L) x 74mm (w) x 26mm (H)	158mm(L) x 78mm(W) x 28mm(H)
<b>Battery Supply</b>			
Main Battery	Lithium-ion 3.7v / 4,400mAh (Rechargeable)	Lithium-ion 3.7V 3,000mAh (Rechargeable) Up to 2,200mAh, 4,400mAh (Option)	Lithium-ion 3.7V 3,000mAh(Rechargeable) Up to 2,200mAh, 4,400mAh (Option)
Backup Battery	Lithium-Polymer 3.7v / 100mAh (Rechargeable)	Lithium-Polymer 3.7v / 100mAh (Rechargeable)	Lithium - Polymer 3.7V 100mAh(Rechargeable)
Power Adapter	Input AC100V~240V / Output DC5V 3A	Input AC100V~240V / Output DC5V 3A	Input AC100~240V / Output DC5V 3A
<b>Network Characteristics</b>			
WLAN	WLAN(802.11 b/g compliant)	WLAN(802.11 b/g compliant)	WLAN(802.11 a/b/g compliant)
Bluetooth	Class II, v2.0 (SPP Only)	ClassII, v2.0 (SPP Only)	Class II, v2.0 (SPP Only)
Radio	GSM/GPRS, CDMA or HSDPA	GSM/GPRS, CDMA or HSDPA	GSM/GPRS, CDMA or HSDPA
GPS	D - GPS with Internal Antenna	D - GPS with Internal Antenna	D - GPS with Internal Antenna
<b>Data Capture Device</b>			
Barcode Engine	1D Laser or 2D Imager Scanner	1D Laser or 2D Imager Scanner	1D Laser or 2D Imager Scanner
Printer	None	None	None
Camera	3.0 Mega Pixel Fixed Focus with Flash	3.0 Mega Pixel Fixed Focus with Flash	3.0 Mega Pixel Fixed Focus with Flash
<b>Card Processing</b>			
Magnetic Card Reader	None	None	None
Smart Card Reader	None	None	None
<b>UHF 900Mhz Reader</b>			
Frequency	860MHz ~ 960MHz	860MHz ~ 960MHz	860MHz ~ 960MHz
Reading range	0m ~ 7m (According to Tag & Environment)	0m ~ 7m (According to Tag & Environment)	0m ~ 7m (According to Tag & Environment)
Writing range	0m ~3m	0m ~3m	0m ~3m
RF output	1W EIRP	1W EIRP	1W EIRP
Protocol	EPC Gen2, ISO/IEC 18000-6C, 18000-6B (Option)	EPC Gen2, ISO/IEC 18000-6C, 18000-6B (Option)	EPC Gen2, ISO/IEC 18000-6C, 18000-6B (Option)
Special function	Anti- Collision	Anti- Collision	Anti- Collision
<b>HF 13.56Mhz Reader</b>			
Applied RFID Tag	ISO 15693 Standard , Mifare,ISO 14443 Type A/B	ISO 15693 Standard , Mifare,ISO 14443 Type A/B	ISO 15693 Standard , Mifare,ISO 14443 Type A/B
Reading range	Based on ISO Card(0~8.5Cm), Mifare (0~3.5Cm)	Based on ISO Card(0~8.5Cm), Mifare (0~3.5Cm)	Based on ISO Card(0~8.5Cm), Mifare (0~3.5Cm)
<b>Gun Handle</b>			
PDA or UHF (Gun Handle)	Gun Handle Trigger	Gun Handle Trigger	Gun Handle Trigger
Gun Handle Battery	Lithium -ion 3.7V 4,400mAh(Rechargeable)	Lithium -ion 3.7V 4,400mAh(Rechargeable)	Lithium -ion 3.7V 4,400mAh(Rechargeable)
<b>Cradle</b>			
Standard Interface	USB 1.1 Client(I/O port 24pin) & host DC power input jack	USB 1.1 Client(I/O port 24pin) & host / DC power input jack	USB 1.1 Client(I/O port 20pin) & host DC power input jack
Ethernet RF45J Interface	None	Ethernet RJ45	Ethernet RJ45
RS-232C Interface	RS-232C Interface	RS-232C Interface	RS-232C Interface
<b>**Accessories : Adaptor, Sync cable, Hand strap, stylus pen, protect film, Body battery</b>			
<b>※ All Features and specifications described are subject to change without notice.</b>			



Items	Si303	Si506	Smart Eagle
<b>Performance Characteristics</b>			
Processor	Marvell™ PXA320 806MHz	32bit ARM Cortex-M3 72MHz	Samsung S5PC110 1GHz
Operating System	Windows CE 5.0	None	Android 2.2(Froyo)
Memory	ROM 256MB (Max.512MB Option) / RAM 256MB	ROM 256KB (Max. 512KB) / RAM 48KB	ROM 512MB / RAM 512MB
Display	3.5" QVGA with Backlight, TFT LCD, 240 x 320Pixel, 262, 144 Color	None	4" Diagonal TFT LCD, 256k Colors Resolution(480W x 800L) with backlight / Auto Display Rotate
	Stylus Touch Screen Interface	None	Stylus Touch Screen Interface
Weight	520g	80g	190g
Operating Temp.	-10°C to 50°C	-20°C to 50°C	-20°C to 50°C
Storage Temp.	-30°C to 60°C	-30°C to 60°C	-30°C to 60°C
Humidity	95% non-condensing	95% non-condensing	95% non-condensing
Drop Spec.	1.5M.Drop to concrete	1.5M.Drop to concrete	1.2M.Drop to concrete
Dust & Water Proof	-	IP54	IP65
<b>Physical Characteristics</b>			
Audio	Mono speaker, Ear jack	Buzzer	Speaker, Microphone, Headset jack
Port	Serial Port(RS-232), USB 1.1	1 USB PORT	USB OTG
Expansion Slot	1 Micro SD Slot(SDHC support) /1 SIM Slot / 3 SAM Slot	None	1 Micro SD Slot (SDHC support)
Notification	Vibrator and LED	Vibrator and LED	Vibrator and LED
Dimensions	222mm(L) x 82mm(W) x 43mm(H)	105mm(L) x 43mm(W) x 20mm(H)	140mm(L) x 68mm(W) x 23mm(H)
<b>Battery Supply</b>			
Main Battery	Lithium-ion 7.8V Above / 2,200mAH (Rechargeable) Up to 3,300mAH (Option)	Lithium -ion 3.7V 1,300mAH	Lithium-ion 3.7V 2,260mAH (Rechargeable) Up to 3,600mAH (Option)
Backup Battery	Lithium-Polymer 3.7V, 100mAH (Rechargeable)	None	Lithium-Polymer 3.7v / 75mAH (Rechargeable)
Power Adapter	Input AC100V~240V / Output DC12V 1.5A	None	Input AC100V~240V / Output DC5V 2A"
<b>Network Characteristics</b>			
WLAN	WLAN(802.11 a/b/g compliant)	None	WLAN(802.11 b/g/n)
Bluetooth	Class II, v2.0 (SPP Only)	v 2.0+EDR Class1	Class II, v2.0 (SPP Only) 2.1+EDR of 1,2 and 3 Mbps, UART/Audio PCM Interface for Bluetooth
Radio	GSM/GPRS, CDMA or HSDPA	None	GSM/GPRS, 3G HSDPA
GPS	D - GPS with Internal Antenna	GPS with Internal Antenna	D - GPS with Internal Antenna
<b>Data Capture Device</b>			
Barcode Engine	1D Laser or 2D Imager Scanner	1D Laser Scanner	1D Laser or 2D Imager Scanner
Printer	2 inch Thermal Printer / Printing Speed : 75mm/sec.	None	None
Camera	3.0 Mega Pixel Fixed Focus with Flash	None	CMOS 5.0 Mega Pixel Auto Focus with Flash
<b>Card Processing</b>			
Magnetic Card Reader	ISO7811, ISO7812, Track 1,2,3 / Bi-Directional	None	None
Smart Card Reader	ISO7816, EMV L1/L2 Certified	None	<b>None</b>
<b>UHF 900Mhz Reader</b>			
Frequency	860MHz ~ 960MHz	None	850MHz ~ 960MHz
Reading range	0m ~ 7m (According to Tag & Environment)	None	0m ~ 5m (According to Tag & Environment)
Writing range	0m ~3m	None	0m ~ 2m
RF output	1W EIRP	None	1W EIRP
Protocol	EPC Gen2, ISO/IEC 18000-6C, 18000-6B (Option)	None	EPC Gen2, ISO/IEC 18000-6C, 18000-6B (Option)
Special function	Anti- Collision	None	Anti-Collision
<b>HF 13.56Mhz Reader</b>			
Applied RFID Tag	ISO 15693 Standard , Mifare,ISO 14443 Type A/B	None	ISO15693, Mifare, ISO 1444E Type A/B, My-d, TAG-it
Reading range	Based on ISO Card(0~8.5Cm), Mifare (0~3.5Cm)	None	Based on Tag (0 ~ 10cm)
<b>Gun Handle</b>			
PDA or UHF (Gun Handle)	None	None	None
Gun Handle Battery	None	None	None
<b>Cradle</b>			
Stardard Interface	USB 1.1 Client(I/O port 20pin) & host DC power input jack	None	USB 2.0 OTG
Ethernt RF45J Interface	Ethernet RJ45	None	None
RS-232C Interface	RS-232C Interface	None	None
<b>**Accessories : Adaptor, Sync cable, Hand strap, stylus pen, protect film, Body battery</b>			
<b>※ All Features and specifications described are subject to change without notice.</b>			



## Worldwide Industrial Revolution



**ATID CO., Ltd**

#1210, Byuksan/ Gyungin Digital Valleyll, #481-10 Gasan Dong, Geumchun Gu, Seoul, Korea

Tel: +82-2-544-1436 Fax: +82-2-2113-0040 E-mail: [webmaster@atid1.com](mailto:webmaster@atid1.com) website: [www.atid1.com](http://www.atid1.com)